

The Changing Face of IFLA

By Diane MENZIES

There have been huge changes in IFLA, and the world, in the fifty plus years since the founders met at Jesus College Cambridge in 1948 to consider the formation of a federation and what it might do. There have even been major changes in IFLA and how it operates in the last five years.

When IFLA met at the 37th World Congress in San Jose, Costa Rica in 2000 the four largest associations, ASLA, CSLA, LI and AILA rejoined IFLA. At that meeting IFLA tape-recorded all discussions which were transcribed to a 70 page verbatim document. The larger associations have brought further expertise, support and integration to IFLA and electronic communication among members has enabled succinct and prompt minutes and more effective task management.

IFLA News had been compiled by an editor, typeset, printed and posted in bulk to member associations for distribution twice yearly: a major cost in the IFLA budget. However, by the time it reached members, its news worthiness was diminished. IFLA News is now produced with over twice the frequency (5 times a year) and distributed electronically to members, with a once yearly paper copy produced when required. There is minimal cost for production of the electronic News, which is also posted on IFLA's website.

Each year since 2000 further members, both as individuals and associations, have joined IFLA. In 2005 this includes CHSLA (PR China) and AUDADP (Uruguay) and individual member Karma Wangchuk of Bhutan. Last year ISOLA (India) joined IFLA and then held an inspiring regional conference in February 2005. The professional network draws closer together and the gaps on the global map of membership are being filled.

IFLA committees have also changed over the years. Originally, IFLA committees had been a vigorous force in exploring the frontiers of the profession. However, they gradually became ineffective and were disbanded. Electronic communication and a wider membership has enabled some previous barriers to be overcome and there are now a number of committees assisting policy, project and programme work within IFLA. In past years judging had been conducted by the IFLA Vice Presidents who agreed that they may not be the best people for the task. This was undertaken, to save costs, at the World Council meeting but that meant that the winners could not be notified in time to receive their prize at the Congress

The judging is now undertaken a month before the Congress and the teams of first and second prize winners, all from PR China this year, are currently hoping to travel to Edinburgh to receive their awards and take part in the student congress.

Further proposals for committees are to be put to the World Council in June. One of these, on Africa, is to try to establish a network of practitioners in Africa and to support education and standards of the profession in an area where IFLA currently has few contacts, and where increasing challenges such as poverty and instability create barriers for our profession.

The IFLA family of members is closer than in 2000 and examples of increasing communication, collaboration and support among members are impressive. A recent example is the immediate response from DL, the Danish association, and ASLA, the US association, to the heart wrenching message from our individual member Priyanka Ranatunga in Sri Lanka, to the devastation caused by the December 2004 Tsunami. Other examples are the support shown by ASLA to a request for assistance for a new landscape architecture course in Bulawayo, Zimbabwe, and by KILA, (Korea) through their contractor firms, to enable our new Bhutanese member to attend the World Council meeting.

Landscape architects are raising the profile of our profession in the countries throughout the world. An invitation to an exhibition of photographs 'The Place of Gardens' by Mary Padua in Hong Kong this year, the work undertaken by young landscape architects on the Osek Monastery in Czech Republic, and the launch of a publication of his life's work by I.P Santos of the Philippines late last year are examples of the diversity and contribution of our members.

Each is leading the way in their fields and I encourage many more to follow suit. And let others know. Through IFLA News, we can promote such examples and give others, ideas and inspiration for work in their localities.

There will also be a change in the role of Secretary General in 2005 from myself to Radmila Fingerova. She may be initially overwhelmed but continually impressed with the diversity of activities in IFLA, and the ever-growing communication needs. 2005 will also be the catalyst for the establishment of an IFLA/EFLA joint office, I hope, further bringing the profession together and enabling us to respond to members and organizations with which we collaborate.

I am pleased to have been part of IFLA at a time when ideas and a compelling desire to respond, to move outwards, has driven the profession. I wonder what the face of the profession will be in another five years time?

IFLA EXECUTIVE COMMITTEE

www.iflaonline.org
admin@iflaonline.org

President

Martha C. FAJARDO
president@iflaonline.org

Vice-President Eastern Region

James N. HAYTER
vp_east@iflaonline.org

Vice-President Central Region

Jeppé A. ANDERSEN
vp_central@iflaonline.org

Vice-President Western Region

James R. TAYLOR
vp_west@iflaonline.org

Secretary General

Diane Menzies
secgen@iflaonline.org

Treasurer

Bee Choo TAY
treasurer@iflaonline.org

Elect Secretary General

Radmila FINGEROVA
secgen@iflaonline.org

IFLA New Members

AUDADP / Uruguay

By Fernando BRITOS

In June 2004, the Regional Conference 2004 IFLA Western Region took place in Buenos Aires and following this event, we started the process of establishing this Association.

The Foundation Act of the Asociación Uruguaya de Arquitectura de Paisaje (AUDADP) was signed on 2 August 2004 by 5 founding members, in Montevideo, the Capital City of Uruguay.

Finally on 16 August, 2004, 14 University graduates from the Faculties of Architecture and Agronomy signed the Memorandum of Creation and approved the Association's Bylaws.

Uruguay does not have specific training in Landscape Architecture. The 14 members of AUDADP have obtained their specialization in the thematic subject by taking university courses abroad, or through courses given by the Continuous Education Unit of the University of the Republic of Uruguay and/or through their professional practice. All this is evidence of an undisputable vocation regarding Landscape Architecture.

Our country possesses gardens in public and private spaces – both in Montevideo and other cities and villages in the country – that make us proud of their quality of landscaping. As from the second half of the nineteenth century we can trace a history of the process of landscape gardening of our squares, parks and private properties, part of the identity of our urban and rural landscapes.

From our Association we intend to inherit this national legacy of landscaping. We are working on the thematic issue of academic training and on the issue of recognition and positioning – both in the national and international contexts – of the Uruguayan Professional in Landscape Architecture.

Our task will not be an easy one, but we are laying our stakes on our professional growth and, with our achievements, of giving testimony on the singular reality of the passion that unites all the members of IFLA: landscape architecture.

Pablo ROSS,
Carlos PELLEGRINO,
Margarita MONTAÑEZ.
AUDADP Executive Committee

Chinese Society of Landscape Architecture

CHSLA

By Prof. Xiaoming Liu

Legally registered, the Chinese Society of Landscape Architecture is an academic, science-popularizing, non-profit, national organization composed of professionals of landscape architecture across the country. CHSLA is part of the Chinese Association of Science and Technology (CAST).

The former body of CHSLA originated as part of the Architectural Society of China (ASC) in 1978. In 1989 it was formally founded as one of the national first grade societies in China, independent of ASC. CHSLA has members who are from planning, design, education, construction, research and management in the field of landscape Architecture as well as other related fields all over China. Members of CHSLA have made outstanding contributions to the great achievements in landscape architecture in China in the past decades. CHSLA uses the Chinese translation Fengjing Yuanlin for Landscape Architecture and Fengjing Yuanlin Shi for Landscape Architects. The latter will be one of the registered professions nationwide guided by Chinese Ministry of Construction.

The objectives of CHSLA are to organize and unite professionals of landscape architecture all over China, work for preservation of national natural, cultural and historical resources, build eco-friendly and beautiful habitat environment, inherit and develop the excellent tradition of Chinese landscape architecture, absorb world advanced science & technology, establish and improve a scientific system of landscape architecture with Chinese characteristics, raise the level of science and technology of the profession, promote the training of the professionals and undertake research in order to satisfy social needs for the natural environment .

The field of CHSLA deals with gardens and parks, urban greening and landscaping, famous scenic sites (national parks) and earthscape. The main subjects include history & theory of landscape architecture, preservation of historical gardens, natural and cultural heritage, landscape planning and design, garden-buildings, landscape engineering, landscape plants, zoo animals, urban green space system, famous scenic sites (national parks), recreation & resort areas, natural conserves, urban and rural ecosystem, human habitat environment, landscape architecture economy and management.

In order to promote the profession, CHSLA is actively involved in academic exchanges, exploration of theory, introduction of advanced landscape technology, and popularization of landscape science & technology through publishing journals, books and know-how. CHSLA also undertakes research and evaluation of important projects and development strategies, consultative services, international exchanges and non-governmental collaboration, exhibits, spreading landscape information, and so on.

CHSLA includes eight committees and two branches, and one center: China Research Center of Landscape Planning & Design, which is one of the national recognized Grade A. landscape architectural planning and design institutes. In addition, CHSLA publishes two journals--- Chinese Landscape Architecture, and Landscape Architecture and one magazine--- Garden.

Prof. Ganshi Zhou, Member of the Academy of Sciences of China, and Member of the Academy of Engineering of China, is currently President of Chinese Society of Landscape Architecture (CHSLA). He is also President of Urban Planning Society of China.

New individual members

From Malta



By Pierre Micallef

©1998-2005 / [MaltaVista](#)

A few words to describe the landscape and the landscape profession in Malta.

A view of the Maltese Islands is typical of a Mediterranean landscape. The limited size of the land together with a high population density and urban sprawl that has increased considerably during the past decades have created an environment in which natural and cultural domains are strongly interwoven. Malta is a typical example where the definition of landscape is over-arching. In fact the distinction between the two is hardly noticeable in certain areas.

Malta's natural environment is characterised by specific rock formations, a hilly landform and a variety of natural ecosystems. In order to provide suitable terrain for agriculture, in time man sculpted the slopes to create terraced fields delineated by large extents of stone masonry rubble walls and incorporating diverse vernacular structures. The latter, predominantly taking the shape of sparse stone cubic forms set in the open landscape, besides originally serving various agricultural amenities, still form an inherent and most particular feature of the local rural scenery.

Walking distance away, are the village cores - originally organic, apparently haphazard arrangements of solids and voids, separated by winding streets leading to the village churches. These, together with the better-known prehistoric archaeological remains, and the rigid grid planning and Baroque buildings shaping the capital city Valletta, constitute the Maltese cultural landscape.

A deep appreciation and respect for the islands' historic landscape, natural and cultural, lies at the heart of sustainable planning policies and authentic design work. This is the fundamental scope of landscape education imparted to undergraduate and diploma students at the University of Malta. Although still in its embryonic phase, the study and practice of Landscape Architecture, is gradually gaining momentum. Malta's entry into the European Union is a step forward in facilitating local awareness on landscape issues, whilst augmenting international collaboration in this field.

From Bhutan

By Karma Wangchuk



Firstly I would like to thank Dr. Diane Menzies, Secretary General, IFLA and the KILA Korean Institute of Landscape Architects in providing the enabling environment for the first Bhutanese representation at the IFLA World Congress.

Bhutan is a tiny mountain Kingdom sandwiched between China and India in the eastern Himalayas. With a population of just over 600,000 people, Bhutan pursues a development philosophy of Gross National Happiness (GNH) through 1) good governance 2) promotion of culture 3) preservation of the environment, and 4) balanced economic development to strike a balance between spiritualism and materialism. At 2300m, Thimphu is the capital of Bhutan.

Most Bhutanese are subsistence farmers. About one in four Bhutanese live in the urban areas. Abject poverty or homelessness is nonexistent. Education and healthcare is provided free of cost by the government. As more children get educated, the younger generations prefer to seek better opportunities in the towns than their rural hamlets. By the year 2020, it is estimated that half the population of Bhutan will be residing in the urban areas.

As the first landscape architect and urban designer from Bhutan my work is two fold 1) plan and design the necessary expansion to the network of urban amenities within the existing urban centers through the preparation of local area plans, coordinate investments in urban infrastructure from the various sectors, enhance linkages by providing better footpaths networks, roundabouts in critical junctions, preserve the environment, and provide recreational areas to the population, and 2) plan and design the anticipated regional growth centers so that these centers would have adequate urban infrastructure in place to cope with the projected increase in population. This ensures that ad-hoc development does not occur and that prime agricultural land and ecologically fragile areas are properly protected. The use of GIS analysis and aerial photography to also allows us to ascertain development trends in our major urban areas.

By international standards Bhutan's urban centers are relatively small. Thimphu enjoys a temperate climate and is Bhutan's largest city with population of about 50,000 people. Traffic lights are non-existent and there are no MacDonaldis or KFCs. Despite our small size our urban problems and challenges are no less: provision of safe and adequate water supply, solid waste management, affordable housing, timely public transport, etc. By law, new building proposals are required to incorporate traditional architectural elements and facades and are allowed only a maximum of five floors. The result is a built environment at a human scale, composed of building materials that lends a Bhutanese feel and aesthetics.

Bhutan will be celebrating the Centenary of Monarchy in 2007. It will be an important year for the Bhutanese to mark 100 years of peace, tranquility and prosperity. It will also be a very good opportunity to showcase the contributions the profession of landscape architecture can make to the quality of the built environment and space in Bhutan. Much needs to be done yet.

I look forward to attending my first IFLA World Congress and meeting and learning from the global extended family of our landscape architecture profession and applying the experience and the knowledge that I take away from the meeting into tangible solutions back in Bhutan.

ktwangchuk@druknet.bt



©from Heiner Rodel files



Dear colleagues,

It is great honour and immense responsibility to work for an organization with such a long tradition. I will try to fulfil all my duties according IFLA Constitution and follow the ideas of the founders of IFLA.

I am very delighted to know that I will be a member of great team. An integral team is the most important basis for good results. It will be extremely difficult for me to be as good as Diane Menzies - but she helps me just now and she will help me as much as possible to safeguard continuity. Beside my duties I will also try to contribute a little bit in a process of IFLA & EFLA coming together.

Radmila Fingerova
IFLA Secretary General
elect

THE IFLA LOGO

By Arno Sighart Schmid

Notes are held of an Informal Meeting held at Jesus College, Cambridge, 14th August 1948, in the name of the INTERNATIONAL CONFERENCE OF LANDSCAPE ARCHITECTS.¹ At that meeting the Chairman, Mr. G. Jellicoe of Great Britain¹ asked all delegates if they desired to form an International Federation. "Agreed unanimously," was the response. That was the birth of IFLA.

The same records include the following resolution: "It was also proposed that the emblem of the Federation should be a cock and the world". The coat of arms of Jesus College shows three cocks facing to the right, and quite obviously it served as a model for the new emblem: it was to be a global federation (the world), and the cock crowed at a new dawn. A printed version of this emblem has not been located.

In the 1961 publication by "DJAMBATAN PUBLISHERS AND CARTOGRAPHERS AT AMSTERDAM", "SPACE FOR LIVING", which was edited by Sylvia Crowe and in which thirteen experts from various countries discuss landscape architecture and its relation to the allied arts and professions, and then again in a two-volume publication by the same printers in the Netherlands, published in 1964, "SHAPING TOMORROW'S LANDSCAPE"¹ a somewhat different emblem is printed. It shows a cock's head facing left, inside a rose flower with three little leaves. The following text accompanies the emblem: "A cock and a rose appear in the coat of arms of Jesus College, Cambridge. They were taken as the emblem of I.F.L.A. to mark its foundation there in the summer of 1948. The rose symbolizes man's historic love for a garden. The cock announces the dawn of a new landscape age."

For the 10th IFLA World Congress held in 1966 in Stuttgart, Germany, the printed material again shows a somewhat different emblem: what could be interpreted as either a round stylized rose, or the globe of the world, is shown with a minimized cock's head facing left growing out of the round object on the top right hand side.

The cover of the official publication, invitations and cards of the 11th IFLA World Congress organized in 1968 by the Canadian Society of Landscape Architects in Montreal showed a full-bodied cock facing to the right, whose body is a kind of flower, the neck and tail feathers look like leaves, and the head is the shape of a tulip, with the comb nestled on top of it.

Then in 1974 a new IFLA logo, a circle in a square with four bands connecting the circle to the sides of the square, first appeared in ANTHOS, then the official magazine of the Federation. IFLA NEWS, first published in January 1978, used this same logo from its inception, and so did the IFLA YEARBOOK starting in 1980.

This was also the time when IFLA changed from the biennial congress to a world congress every year, starting from 1978. The green flag that has been on display in IFLA Grand Council and World Council Meetings as well as the Congresses appeared somewhere along the line in the late 70-ies, so no one has been able to tell me just who actually has sown it up, and where and when it was first displayed. The IFLA logo, reminiscent of a detail in an historic garden with a round bed or fountain in the centre, a circular walkway and four paths leading off in the four main directions of the compass, has been in use for more than 30 years now, and has been used in numerous and ingenious variations.

IFLA Communications: Web Site and Email Contact

James Hayter IFLA Web Manager

Together, IFLA News and the IFLA web site are the two primary means of communication IFLA has with its membership. Over its last term, the IFLA Executive has concentrated on developing both of these, ensuring that communications are in an easily accessible form that appeals to a broad spectrum of reader. Effective communications are an essential part of any representative professional association, and IFLA News and the IFLA web site have broad appeal and is one reason why IFLA is now well recognised globally as the association representing the landscape architectural profession, not just with landscape architects, but with other associated professionals and representative professional groups who source IFLA for news and contacts.

The IFLA web site (www.iflaonline.org) has undergone a big change over the last two months although this will take time to be noticed. We now have a new host which means we will be able to incorporate dynamic content, including mailing lists, possibly an active jobs/opportunities board and a news area that we will be able to maintain internally, saving resources previously dedicated to updating the site - these can now be directed towards development of other areas of the site. Dedicated email addresses have been assigned for members of the Executive Committee and a new web address for regional sites.

The other valuable tool our new hosts offer us is a statistics counter which will aid in the future development of the site. Monitoring has only occurred for a limited period of time (April to June). So far, the statistics tell us we are receiving an average of over 100 unique visitors each day, and that just over half of these visitors are regular and access the site via their bookmarks/favourites. Approximately a quarter are accessing the site via search engines and others via links from other sites.

The aim of the IFLA web site is to provide a forum for the exchange of ideas and information, and we welcome ideas as to how you would like to see this develop. Please contact me at vp_east@iflaonline.org with suggestions on how to improve the IFLA web site.

Western Region

Program for education of professors of landscape architecture / FUPAM



By Paulo Pellegrino

The original program was developed by landscape architects Rosa Kliass, Paulo Pellegrino and Vladimir Bartalini in 2002; in 2003 Catharina Lima joined in the task of its organization. Jim Taylor did the call for teachers at the CELA conference and collected 28 resumes, helping us to start the selection and invitation of the most appropriate names for the planned courses. When the final proposal was prepared it was presented with the participation of Jim, at an ABAP and FUPAM event in São Paulo. Since then, for every module Paulo Pellegrino, as the general coordinator, with the support of Vladimir Bartalini and Catharina Lima, has started the process of contacting people months in advance. They have worked with the North-Americans teachers and their Brazilian partners to develop course outlines and prepare material for circulation.

After selection of candidates was undertaken based on application forms, resumes and letters were sent to candidates for each module. 48 professionals and teachers of landscape architecture from eight states and 22 cities from all over the country and neighboring countries, representing 17 educational institutions were selected and attended. This represented a unique opportunity to update and modify their perceptions of the broader scope of the profession and what the education and training should be in this field. The possibility of changing concepts, materials, didactical procedures and class topics with their colleagues represented a huge asset for all the local and foreigners teachers involved in the courses. The idea of opening these opportunities to all local landscape architects was arranged, with the support of the Brazilian Society of Landscape Architects (ABAP). Technical sessions were conducted by the invited teachers, and they got the opportunity to show their work and exchange ideas with a broader public. These meetings took place during their stay here.

Eight North-American leading educators in landscape architecture have already participated in the Program as shown below (four more are scheduled for July). Most of the invited teachers took advantage of this trip to undertake further excursions in the country. We have helped with contacts and directions. An example of this is the article signed by Kim Sorvig which concludes the February issue of Landscape Architecture Magazine.

We assume that even with these preliminary results this Program has clearly shown that this kind of program is one of the best tools that we have to bring the profession to the same level in the different realities of our countries. Our aim now is to successfully complete the last module, with the teachers and students already booked. We hope that IFLA will support it as it has been doing so far.

Each module has had 3 weeks duration with a total of 90 hours of classes, divided in 30 hours weekly courses. The activities have comprised lectures, studio, field trips, presentations and seminars. They were developed mainly at the Graduate Program Building of the Architectural and Urban Planning School of the University of São Paulo (FAUUSP), Vila Penteado, an architectural landmark at the central neighborhood of Higienópolis, São Paulo.

Projects in Latin America

By Jimena Martignoni



Over the last year, the *Landscape Architecture Magazine* (ASLA) has been publishing articles about projects in Latin America. Those professionals around the world, who are "frequent readers" of the American largest publication of the Landscape Architecture, Planning and Landscape Design fields, must have noticed already that South America is becoming indeed part of the American scene.

Even when this sounds, or at least should sound, as an obvious statement, the truth is that the exposition and promotion of Latin American Landscape Architecture projects and professionals had not had the necessary recognition that other Regions historically have had.

Starting with a first article ("New Green Areas for Puerto Madero and Revitalization of Costanera Sur", April 2004) about a project in Buenos Aires, where I live, the ball got rolling and after that, Bill Thompson agreed to publish seven other projects: Feliz Lusitania cultural complex - Belem, Brazil - designed by Rosa Kliass (October 2004); Restoration of Parque del Este - Caracas, Venezuela - designed by Fernando Tabora (February 2005); Urban Renovation of Bogotá city - Colombia - presented by Diana Wiesner (March 2005); Public Pools in Santiago, Chile (June 2005); Chilean Private Residences by Juan Grimm (July 2005), and 2 projects in Costa Rica y Panama by Carlos Jankilevich, to be published.

What is most remarkable is not only the great opportunity for Latin American professionals to exhibit their work, which is varied and highly interesting, but the possibility for professionals from all around the world to get in touch with this so unique culture and amazing landscapes we have in South and Central America.

Bill Thompson has shown, so far, to have a very open attitude and, why not?, visionary, because this process has proven to be really successful to judge by comments, emails and response from LAs at large.

Following this advanced openness, Robert Schäfer, Chief Editor of *Topos* - the European Landscape Architecture Magazine - will publish an article about Latin America as well. This article, which I was asked to put together, will be on the turning-point issue of the magazine that will become *Topos Global*, and will introduce the state of the profession in Argentina and present a couple of the best describing projects implemented in Buenos Aires.

Hoping the future brings lot of more projects to be shown and many more publishers willing to show them. I personally will keep working on this and I'm sure one day soon Latin American projects will have a more primary role for the profession.

Projects

LE: NOTRE Project Spreads its Wings

By Richard Stiles

Vienna University of Technology, Project Network Coordinator



The LE:NOTRE Project is a Thematic Network funded as part of the European Union's ERASMUS Programme. It brings together the staff of more than 100 European universities in over 30 countries involved in landscape architecture teaching and research, and links them with international partner organisations as stakeholders in the education process, including IFLA. Thematic Network Projects were originally established by the EU to "deal with forward-looking strategic reflection on the scientific, educational and institutional issues in the main fields of higher education" and are now seen as central to the implementation of the European Higher Education Area, through the so-called Bologna Process.

LE:NOTRE was established in 2002 as the only thematic network in landscape architecture following a successful funding application on behalf of ECLAS, the European Council of Landscape Architecture Schools. The project is now into the third of what was originally envisaged to be a three-year project. In line with the objectives of the ERASMUS Programme, the focus has been on investigating the state of landscape architecture education across the continent, both in terms of the similarities and differences.

Although collecting and analysing information about teaching programmes has been an important issue, and is one which is becoming more significant in the light of the growing focus on the 'Bologna Process', which aims to make degree qualifications more transparent and easily comparable and thereby to facilitate the movement of both staff and students within Europe, the project has a wider agenda too. This can best be expressed in terms of the main goal of ECLAS, which is to further the development of the European landscape architecture academic community. The development of the project web site (www.le-notre.org) has been the main strategy towards achieving this objective. This has grown and evolved continuously since the start of the project and now represents a richly interactive platform for both communication and the sharing of information, not just between the universities which are official members of the project, but above all between the individual teachers and researchers who go to make up the nascent European academic community.

The web site is organised into twelve main 'workspaces', one for each of the twelve landscape architecture sub-disciplines identified at the start of the project. Staff can 'register' as members of as many of these working groups as they wish and use the communication tools available on the web site (e-mail with attachments, e-mail lists, discussion forums, notice board, file upload areas etc.) to enter into discussions with colleagues across the continent.

In addition, work is underway on the development of a range of common resources which are available to all members of the Network, but which are also dependent on the efforts of individual members to create them in the first place.

This 'bottom up' philosophy is both the result of necessity - there is simply no central 'LE:NOTRE Office' with a staff of workers to fill the web site with data - but it is also a logical outcome of the conviction that international collaboration is a very powerful tool through which the efforts of the individuals can be multiplied in both quantity and quality if they are repeated by colleagues across Europe.

For example if one person enters ten references into the LE:NOTRE literature database and five hundred colleagues do the same then each of them will have access to 5000 references from any computer worldwide that is connected to the internet: and so on for all the other resource databases (journals, design projects, glossary etc.) which are being and could be developed.

Recently the European Union has come up with a new programme, 'ERASMUS Mundus', which aims to extend the experiences of the ERASMUS Programme to other continents. At the same time they have suggested to Thematic Networks that they also do something similar. So LE: NOTRE is now also beginning to think beyond the boundaries of Europe and is setting up its own 'LE:NOTRE Mundus'.

Contact has already been made with some universities outside Europe, Network Coordinator (richard.stiles@tuwien.ac.at) would be glad to hear from other colleagues in landscape architecture teaching and research worldwide who would also be interested to get involved with the project and help LE: NOTRE spread its wings beyond the European continent.

IFLA New proposal: The Global State of the Profession

James Hayter

Julius Fabos coordinated the first global research on the state of the landscape architecture profession worldwide, summarizing the results in a paper entitled "The State of Landscape Architecture Worldwide", a version of which was presented at the 38th IFLA World Congress 2001. The survey provided a snapshot of our profession; an estimate of the number of landscape architects in each country and typical areas of practice - garden design, site planning or landscape policy planning.

Professor Fabos commented on the "spectacular growth" of the profession during IFLA's tenure from 1948 on, growing from "less than 3,000 to over 75,000 in more than 60 countries". He also proposed strategies, which could be used to introduce landscape architecture into countries where the profession was emerging by focusing on education and encouraging visiting practitioners to be ambassadors for the profession.

The next survey of the profession is planned for early 2006, building on the previous survey to assess current numbers and areas of focus, as well as comparing with the earlier survey. IFLA has defined the following stages:

1. Design Questionnaire
2. Promotion and Ratification
3. Administration of Survey
4. Publication and Follow Up

It is intended that the 2006 survey is carried out electronically via email, with the results presented at the 2006 IFLA World Congress. Progress on the design and implementation of the survey will be reported in subsequent IFLA News.

Eastern region

By James Hayter
IFLA Eastern Region Vice President

Membership.

The joining of China (CHSLA) and India (ISOLA) is an important milestone for the Eastern Region and reinforces the inclusiveness of IFLA as the one representative body for landscape architects worldwide. In the case of CHSLA, it also reminds us that IFLA is a non-political association that is able to represent cultures of varying and perhaps conflicting philosophies within the one umbrella and common objective for advancement of our profession. We welcome CHSLA and ISOLA to the Eastern Region and look forward to the increased awareness of their cultures, which will make IFLA a better organisation.

IFLA ER Awards of Excellence.

The second IFLA Eastern Region Awards for Excellence have been judged and the results will be announced at the IFLA World Congress in Edinburgh. This year saw an increase in participation from associations and a greater diversity of entries. The Awards program is a very positive means of encouraging excellence within the Eastern Region and has proved successful in promoting the work of landscape architects. To me personally, they also provide us with insight on the nature of practice within the region, and the focus - politically, environmentally and socially - that arises from the practice of landscape architecture. Following the announcement of the awards, the entries will be posted on the IFLA ER web site.

Registration.

The IFLA ER Subcommittee on LA Registration has prepared a report compiling and analyzing landscape architects' legislation and registration documents from member countries. To date the subcommittee has managed to obtain 4 documents regarding LA registration. These are from Australia, Hong Kong, Malaysia, and the Philippines. This information has been placed on the IFLA ER web site and is available for viewing. We also hope to obtain information on registration from Japan and New Zealand to add to that already posted. Registration is an important issue facing many countries, and the information collected will assist associations currently debating the issues associated with introduction of a registration or licensing system, or facing government regulation of our industry. The subcommittee also plans to conduct a survey to gauge the opinion of member countries on the need to have their own legislation and registration regarding the profession especially in light of globalisation and WTO requirements.

Regional Conference 2006 Australia.

The dates for the 2006 regional conference at Darling Harbour in Sydney have been set for 25th - 27th May 2006.

Information on the conference, its themes and organisation can be found at:

Call for Papers:

<http://www.aila.org.au/time/callforpapers.htm>

Student Conference:

<http://www.aila.org.au/time/studentcomp>

“2005 Famous Sino-Foreign Landscape Architectural Experts Forum” was held in Beijing, PRC in May 2005.

By Grant Donald grant.donald@atkins.com.cn

The speakers included some of the world's great landscape minds. The Chinese industry was represented by three of China's renowned professionals in Prof Zhou Ganshi President of CHSLA as well as president of 3 other organizations, Prof Zhaozhen Meng from College of Landscape Architecture and Vice President of CHSLA and Prof Ninggao Xie Director of World Heritage Centre, Peking University. The foreign professionals included Professor Julius Fabos from the University of Massachusetts, Professor Peter Latz from University Munich-Weihenstephan and guest professor at University of Pennsylvania and Harvard universities, Professor Arno Schmid President of the Federal Chamber Architects in Germany and Professor Niall G Kirkwood Chair of Department of Landscape Architecture, Director, Centre for technology and environment, graduate school of design, Harvard University.

Together these men brought a wealth of local and international experience to the forum. They talked about where the profession has been, where it is now and where they believe it should go in the future. This is especially pertinent in China where we have a country and civilization that is one of the oldest on earth coming to grips with the profession of landscape architecture which is in its infancy here. This combined with a remarkable building and development rate makes the practice of landscape architecture in China unique.

Professor Fabos extolled the virtues of the University of Massachusetts Greenway Plan and how it has evolved from the 1970's, while America has embraced this system it is one that needs to be looked at very closely in China especially in its current hyper development mode. Professor Latz talked about the metamorphosis of derelict sites and how he is working with some Chinese cities to turn the industrial wastelands into places to live, work and play. These types of sites will become more abundant as China begins to expand its population centers, consolidate its industrial centers and re-evaluate its cities.

On the other hand Professor Zhaozhen Meng lectured about the theory and practice of landscape design in China and how its cultural, historical and philosophical foundations help to create some of the world's best gardens, it must be wondered how these philosophies are being catered for in the modern landscape design circles in China. Professor Ninggao Xie discussed some of China's world heritage sites and what is being done to address these from a development and management perspective. As tourism, development and social pressures become greater the ability of these world heritage sites to manage changes and pressures will become very important.

The people that attended this forum would have been well pleased about the chance to see many of China's and the world's foremost experts talk about issues that are pertinent in China today. It can only be hoped that issues raised and discussed can be helpful in making the landscape profession one that is strong in China and one that can help change the future face of China.

IFLA Events

43rd. IFLA World Congress / ASLA 2006 Annual Meeting and EXPO



Minneapolis, Minnesota USA
October 6th-9th, 2006

By Tom Papandrew
ASLA delegate

Hosted by the American Society of Landscape Architects (ASLA) www.asla.org

About the meeting: ASLA is delighted to host the 43rd IFLA World Congress in the fall of 2006 in conjunction with the ASLA 2006 Annual Meeting and EXPO. The joint meeting, which will be titled the 2006 ASLA Annual Meeting and 43rd IFLA World Congress, will be held in Minneapolis, Minnesota, October 6-9, 2006.

The IFLA Executive Committee will meet on Tuesday, October 3, and the IFLA World Council will convene on October 4 and 5. IFLA registrants for the ASLA annual meeting and IFLA World Congress will have access to special IFLA events in addition to all ASLA meeting events, including over 50 extraordinary education sessions, exciting tours, and exceptional networking events.

About the host city: The St. Paul Airport services the beautiful twin cities of Minneapolis and St. Paul and is only 15 minutes from downtown Minneapolis. The cosmopolitan city boasts outstanding examples of landscape architecture and urban planning and offers something for everyone, including world-class hotels, restaurants, museums, and theatres. The City of Lakes, as it is called, is scenically situated on the Mississippi River and embraces more than 22 lakes within the city limits. Minneapolis is large enough to present a mature skyline, but is perfectly designed for walking, so bring your comfortable shoes. Restaurants abound, with diverse ethnic menus found on Nicollet Avenue, known as Eat Street, home to Greek, German, Thai, Mexican and trendy fusion hot spots. The city boasts more theatre seats per capita than any other U.S. metropolitan area outside of New York City and offers small, eclectic art galleries tucked away in the warehouse district among bars, jazz clubs, and antique shops. The Minneapolis Institute of Arts features paintings and sculpture from Monet to modern, while the Frank Gehry-designed Weisman Art Museum is a shimmering structure. The area's largest modern art museum is the Walker Art Center. Next door, the Minneapolis Sculpture Garden features the whimsical fountain, *Spoonbridge and Cherry*, which has become a signature symbol of the city. All the museums may be visited on one Twin Cities Arts & Museums Pass for a discounted price.

Plan now to join us in Minneapolis for a great meeting in 2006!

Gloria M. Garcia ggarcia@asla.org
Director, Meetings and Special Programs ASLA
636 Eye Street, NW, Washington, DC 20001
t. 202-216-2325, c.202-421-7825

Eastern Region International Landscape Architecture Conference



Darling Harbour, Sydney
Australia

May 25th - 27th, 2006

2006 - will be 40 years of the AILA

The International Federation of Landscape Architects is holding its Eastern Region conference in Sydney from 25th – 27th May 2006. Organised by **the Australian Institute of Landscape Architects** and the **New Zealand Institute of Landscape Architects** in partnership with the **University of New South Wales Faculty of the Built Environment**, this international conference will focus on the theory and practice of landscape architecture within the region.

This conference also celebrates the 40th anniversary of **AILA**. National and international speakers will address the pivotal role of time and change in the practice of the built environment professions and its effects on contemporary society & the landscape.

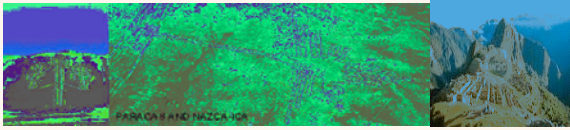
The conference speakers will explore the theme of **TIME** through three sub-themes:

- **TIME** as Catalyst
- Designing with **TIME**
- **TIME** and Technology

As an event, the conference will have international speakers, including practitioners from within the Asian region, as well as Australian practising landscape architects and academics, together with thinkers from outside the discipline to provide a broader context for discussion.

The conference will publish refereed proceedings and will have an associated design competition, both delivered by

Western Region Conference Peru Lima November 3rd to the 5th, 2005



The Peruvian Association of Landscape Architecture and the Municipality of Miraflores are very happy to inform you of the 2005 International Federation of Landscape Architects (IFLA) Western Region Conference.

The theme of the conferences is:
WATER, THE LIFE OF LANDSCAPE.

The event will take place in Lima from November 3rd to the 5th, of this year and we have chosen the Marriott Hotel in Miraflores, as our venue. The conference theme arose from the need to focus on the management of landscape from a multidisciplinary perspective, respecting water and the land. This will give attendees the possibility of accessing the techniques applied by landscape architects and allied professionals from other countries for adaption to their local conditions.

The objectives of the conference are to:

- Generate a dialogue and discussion process with the most ample participation of local and international landscape architects to create a debate on the challenges of the topic for Latin America.
- Promote professional integration, which may allow to strengthen the development of this profession as well as allowing effective participation in the creation of an attractive, equitable and sustainable environment.
- Launch a work program directed to the creation of awareness of the importance landscape and water in the design and execution of urban, rural, environmental and cultural policies in support of environment preservation and social responsibility. It is our intent to create a consciousness among government authorities and the civil society.
- Be of interest to landscape architects, students and related professionals such as biologists, engineers, architects and environmentalists.

Hoping to count with your company's collaboration in this important event.

Very Truly Yours,
Carmen B. de Iberico
President
paiperu@terra.com.pe



For further information on tourist destinies in Peru and/or reservations, please contact us:

NUEVO MUNDO TRAVEL AGENCY
Contact: Mrs. ROXANA COLOMA
28 de Julio Av. 1120 – Miraflores LIMA - PERU
Tel : 00 51- 1 – 610 8070, Fax : 00 51- 1 – 241 6473
EMail: receptivo@gruponuevomundo.com.pe

Report on IFLA Online Journal

By James TAYLOR

A proposal was put forward to develop an IFLA Online Journal at our last World Council Meeting. The concept was developed through a committee headed by Cecelia Paine in the Western Region. This digital magazine would be a collection of the best articles from landscape architecture journals from all parts of the world. The objective was to improve communication through the dissemination of information via the internet.

World Council supported this initiative at the 2004 meeting and a proposal from Robert Schaefer of TOPOS magazine was developed and approved by Executive Committee. A prototype has been developed and reviewed by the Executive Committee at their meetings in February. Mr. Schaefer was provided comments and will present the final design at the Edinburgh World Council Meeting.

A number of Journals have agreed to cooperate and it is anticipated that this new IFLA Online Journal will be available through the IFLA website later this year.



Obituary

Alfred Lesel



June 5, 2005

IFLA Family

Dear Colleagues,

We have just learned with deep regret of the death of **Alfred Lesel**. The World Landscape Architects offer sincerest condolences, to his family, his office, and the OGLA (Österreichische Gesellschaft für Landschaftsplanung und Landschaftsarchitektur).

Alfred was a landscape architect who volunteered his time to many aspects of our profession. Alfred was always a loyal and supportive member of IFLA. He served IFLA well as Secretary General and we are indebted to him. His journey was filled with many accomplishments that spoke highly of his commitment to his profession and his career.

We shall miss him at the World Council meeting.

Austrian Landscape Architecture has lost a great friend; who exemplified vision, strength, dedication and integrity. He will always be in our fondest memories. Sorrowful and heavy-hearted we extend our deep-felt sympathy to Alfred's family and loved-ones.

On behalf of the International Federation of Landscape Architects IFLA; its members, delegates, and the Executive Committee please received our profoundly and sincerely sympathy.

Martha C. Fajardo
President
International Federation of Landscape Architects

John O. Simonds

Prominent, influential landscape architect

IFLA shares the loss of a truly great landscape architect with ASLA colleagues and others throughout the world.

John Ormsbee Simonds, a pioneering modernist landscape architect and one of the most prominent and influential of his generation, died of natural causes on Thursday, 26 May 2005 at his home in Ben Avon Heights. He was 92.

Mr. Simonds, co-founder of Simonds and Simonds in 1940, designed the Chicago Botanic Garden in the 1960s, using the natural wetlands to create a series of linked lagoons where there are now more than 25 themed gardens.

Studying on scholarship at Harvard's Graduate School of Design, Mr. Simonds found refuge from the hidebound classicism of the landscape architecture department under the wings of proto-modern architects Walter Gropius and Marcel Breuer, graduating in 1939.

In 1963, he wrote "Landscape Architecture," a widely used college textbook that has sold more than 100,000 copies. Its fourth edition is now in production. Mr. Simonds was on the faculty of Carnegie Mellon University for 13 years and a visiting lecturer at many schools in the United States and abroad.

He also was the author of "Virginia's Common Wealth," a statewide environmental action plan commissioned by the Virginia General Assembly and still in use today. A past president and fellow of the American Society of Landscape Architects, Mr. Simonds was awarded the group's highest honor, the ASLA Medal, in 1973. In 1999, he received the ASLA's President's Centennial Medal, awarded for the first time "for unparalleled contributions to landscape architecture and service to the ASLA in the 20th century."

He also was a fellow of the Royal Academy of Design in Great Britain.

Mr. Simonds is survived by his wife, Marjorie, whom he married in 1943, as well as four children and seven grandchildren.

© [Patricia Lowry, Pittsburgh Post-Gazette, Saturday, May 28, 2005] ASLA

UPCOMING Design Competition for Länsisatamanpuisto

The City of Helsinki is organising a landscape architecture competition for Länsisatamanpuisto Park in cooperation with the Finnish Association of Landscape Architects MARK. The purpose of the competition is to find a feasible design concept with fresh ideas to serve as the point of departure for the detailed planning and further design of Länsisatamanpuisto park. The competition is by nature a general design competition within the EU area.

The competition area forms part of the Jätkäsaari local plan area, which is predominantly earthfill and will be free for residential, office and environmental construction in 2008, when the Port of Helsinki's cargo operations currently occupying the area are relocated in Vuosaari. Linking the residential areas of Ruoholahti to the waterfront at the southern end of the district, the competition area comprises about 10.5 hectares.

Because most of the area is currently asphalt, a new landscape will have to be created for the entire park. The aim is to develop Länsisatamanpuisto park into a high-quality and functionally diverse park with artistic elements. The park will not only be a functional park for residents, but also a coherent work of art visually.

The competition will begin on 20 June 2005 and the competition deadline is 30 September 2005. The competition is scheduled to be resolved by the end of January 2006.

Kati Susi-Wolff
Association of Finnish Landscape Architects MARK
Competition Secretary kati.susi-wolff@iki.fi

The competition brief and documents will be available at www.hel.fi/ksv/projektit/lansisatama/puistikilpailu

Paesaggio a ischio

Lecture- From 11/06/2005 to 11/06/2005
Roma, Italy

Landscape Architecture
Sala della Protomoteca del Campidoglio
Info: AIAPP Segreteria Nazionale: via Sommi Picenardi,
7 00122 Ostia (Roma) tel +39 06-5684713 fax +39 06-
56368332

<mailto:segreteria.nazionale@aiapp.net>

Conference organised by the Associazione Italiana di Architettura del Paesaggio AIAPP.

4th. EUROPEAN BIENNIAL ON LANDSCAPE BARCELONA

European Landscape Award: Rosa Barba
23, 24, 25th march, 2006.

APPEAL

After three editions with "Remaking Landscapes" (1999), "Gardens in Arms" (2001) and "Only with Nature" (2003), we are delighted to appeal for the 4th European Biennial on Landscape that will take place in Barcelona the 23,24 & 25th March, 2006.

This event is organized by the Order of Architects of Catalunya (CoAC), its demarcation in Barcelona, the Master Program in Landscape Architecture of Polytechnic University of Catalunya (U.P.C.) and the Association of friends of the Polytechnic University.

Once more, the biennial proposes the European Landscape Award Rosa Barba, in which you are invited to present your constructed interventions made in Europe between 2001 and 2005.

We expect those projects to help us to evaluate the profession pulse, and we strongly encourage all professionals of this field to participate.



New Way to Design Green Areas

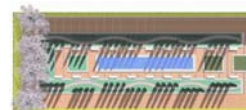
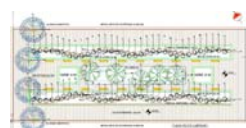
AutoARQ Landscaping 2 is a new tool for landscape design and has been developed by Asuni CAD following the guidelines and recommendations from landscape architects and urbanism professionals. The result is a design tool that can be used for creating a complete landscape project, from the concept stage to the final 3-D presentation with finishes and textures.

Besides providing tools to create and present a project as it was first conceived, *AutoARQ Landscaping 2* runs on AutoCAD. This is a great advantage because most architecture and landscape professionals work with this computer aided design software.

As with all AutoCAD built-in applications, *AutoARQ Landscaping 2* follows the same standards and only requires basic AutoCAD knowledge to use it. This allows designers to quickly and easily integrate graphic computing into the landscape design process. *AutoARQ Landscaping 2* includes the necessary tools to easily create 3D plans and models for parks, gardens, public squares, golf courses, building common areas, etc. in the AutoCAD drawing standard. Working with specific tools allows saving time in the project development and simplifies processes that are very time-consuming.

It works on AutoCAD 2000 to 2005, Autodesk Architectural Desktop and AutoCAD MAP.

For more information, please visit <http://www.autoarqpaisajismo.com/> or contact Asuni CAD by e-mail at paisajismo@asuni.com (+34) 93 319 68 68 or (+34) 91 541 64 39.



© LA Rosana Almuzara
E-mail: rosana@asuni.com



INTERNATIONAL
FEDERATION OF
LANDSCAPE
ARCHITECTS
www.iflaonline.org

IFLA EXECUTIVE
COMMITTEE June 2005

What is IFLA

IFLA is the body representing Landscape Architects worldwide. Its purpose is to coordinate the activities of member associations when dealing with global issues, and to ensure that the profession of landscape architecture continues to prosper as it continues to effect the design and management of our environment. The main objectives of the Federation are:

- The development and promotion of the profession of landscape architecture, together with its related arts and sciences, throughout the world.
- The understanding of landscape architecture as physical and cultural phenomena concerned with environmental heritage and ecological and social sustainability.
- The establishment of high standards of professional practice in the design of the landscape, its management, conservation and development.

To achieve these objectives, IFLA is concerned with:

- The advancement of professional education and continuing professional development of practitioners.
- The improvement of the image of the profession, and communications between members.
- Increased membership to achieve greater global representation of our profession.
- Effective management that makes best use of limited resources and encourages greater participation by members.

IFLA Vision

The organization represents the landscape architectural profession globally, providing leadership and networks supporting the development of the profession and its effective participation in the realization of attractive, equitable and sustainable environments.

IFLA Mission

The International Federation of Landscape Architects (IFLA) is a democratic non-profit and non-political, non-governmental organization representing national landscape associations and individual landscape architects globally. It aims to advance the practice of landscape architecture by:

- encouraging excellence in the design and management of the environment;
- promoting the skills and achievements of landscape architects to the community, allied professionals and decision makers;
- advocating professional standards and ethical practice; and
- providing a forum for the exchange of ideas and information with its annual Congress as a means of continuing education and social interaction.

The values IFLA promotes include professionalism, integrity and accountability. As an organization, we celebrate the contribution landscape architects make to our quality of life and the importance our profession has in the sustainability of our planet.

Keywords

Built and Outdoor Environment in Urban, Suburban and Rural Areas; World Heritage Safeguarding Cultural and Historic Landscapes; Parks, Sites and Gardens; National Parks, Conservation and Recreation Areas; Ecological and Social Sustainability; Site analysis; Environmental and Visual Impact Assessment.